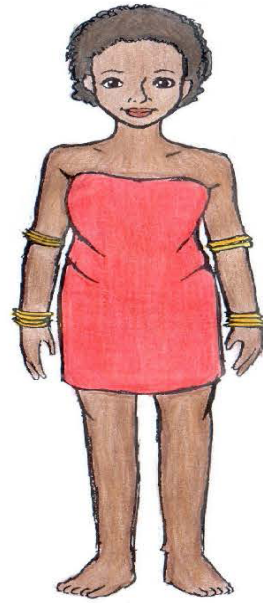


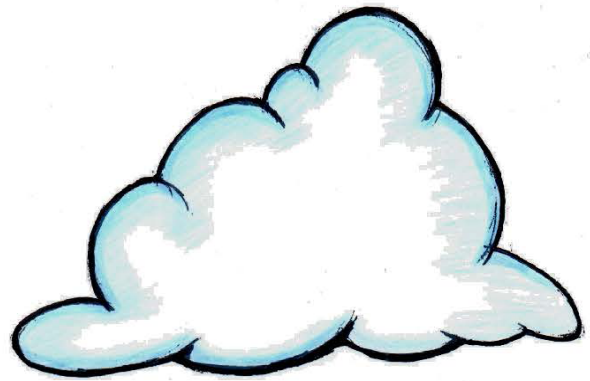
**Seye
Ngahen
Ná**



bebé



mag-adal



diklem



bebé
(babae)

Seye Ngahen Ná (Mga Pangngalan)

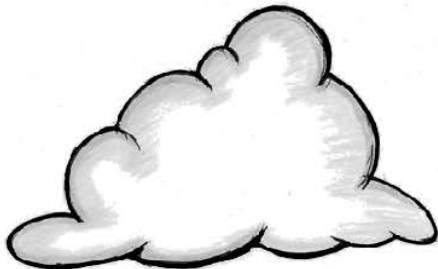
In partnership with the Agta communities in
Maddela and Nagtipunan
Province of Quirino

Produced by:



LYCEUM OF THE PHILIPPINES UNIVERSITY
Community Outreach and Service Learning (COSeL)
Rm. 206-A JPL Building
33 Muralla cor. Real Streets
Intramuros, Manila 1002
Philippines
Telephone #: 527-8251 to 56 loc. 127
E-mail: outreach@lpu.edu.ph

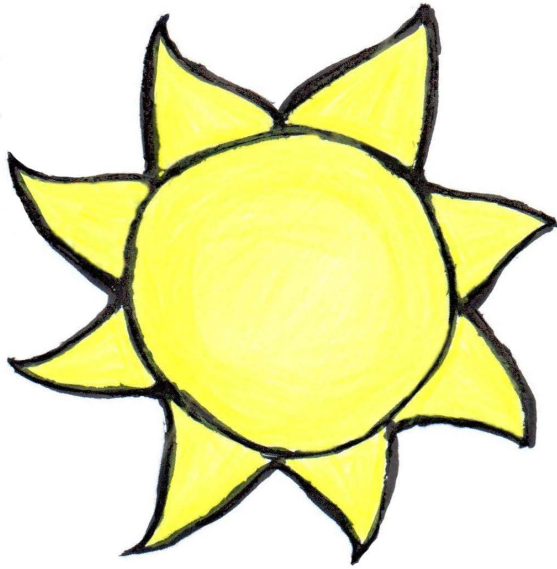
Printed with support from:



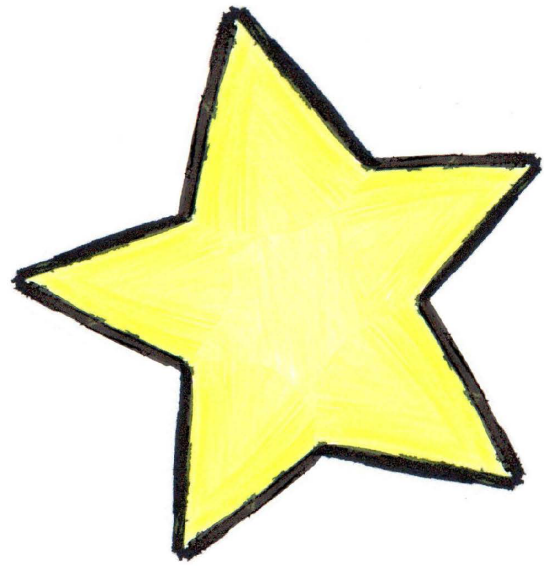
diklem
(ulap)



mag-adal
(mag-aaral)



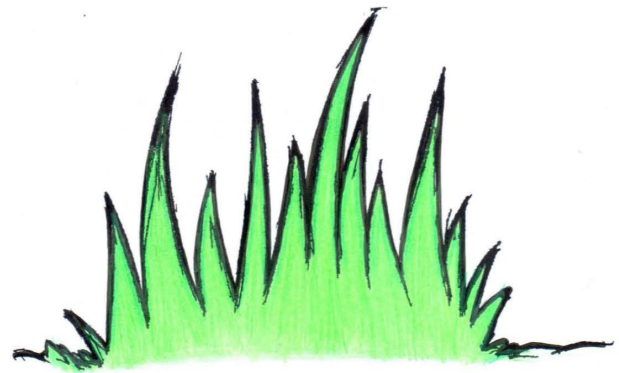
bilag



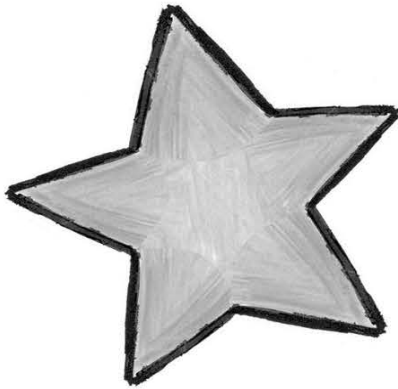
bitun



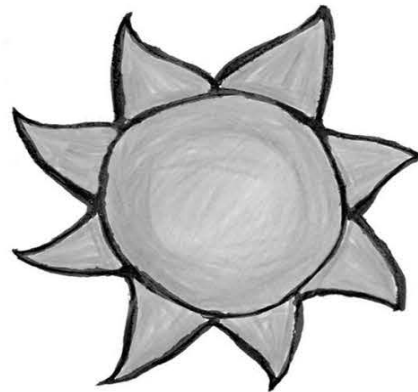
aso



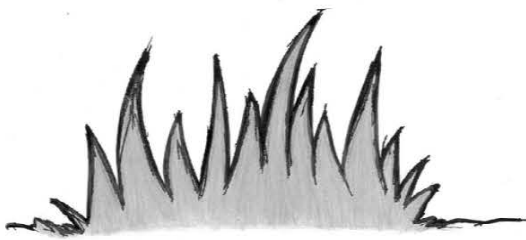
lamon



bitun
(bituin)



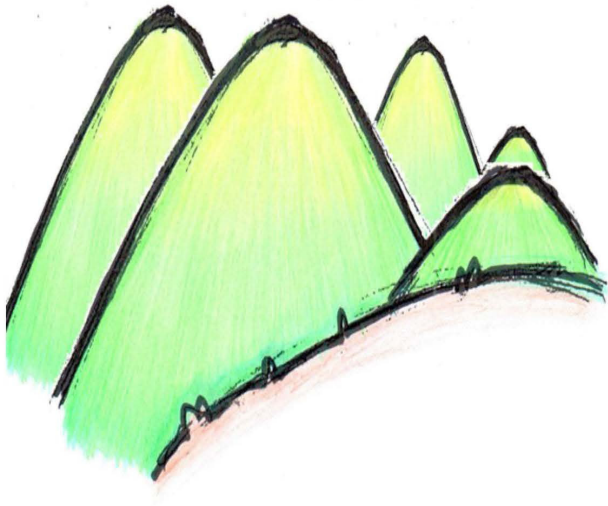
bilag
(araw)



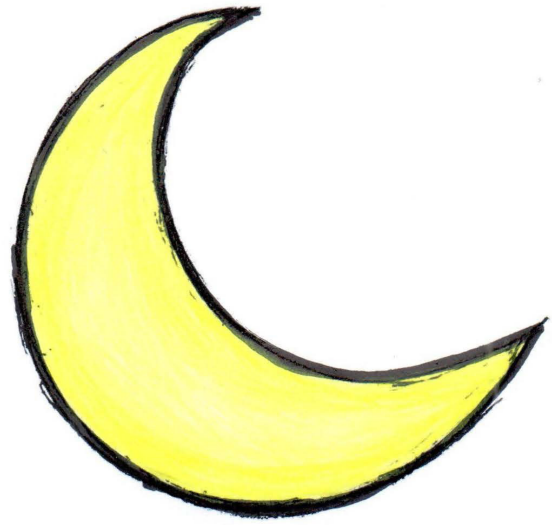
lamon
(damo)



aso
(aso)



talon



bulan



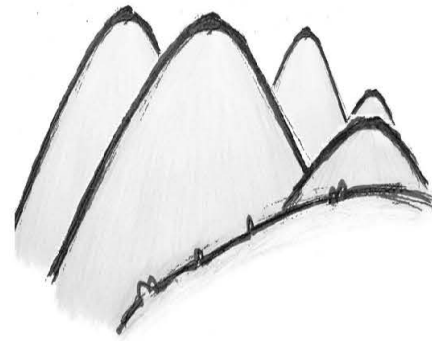
maestra



bukid



bulan
(buwan)



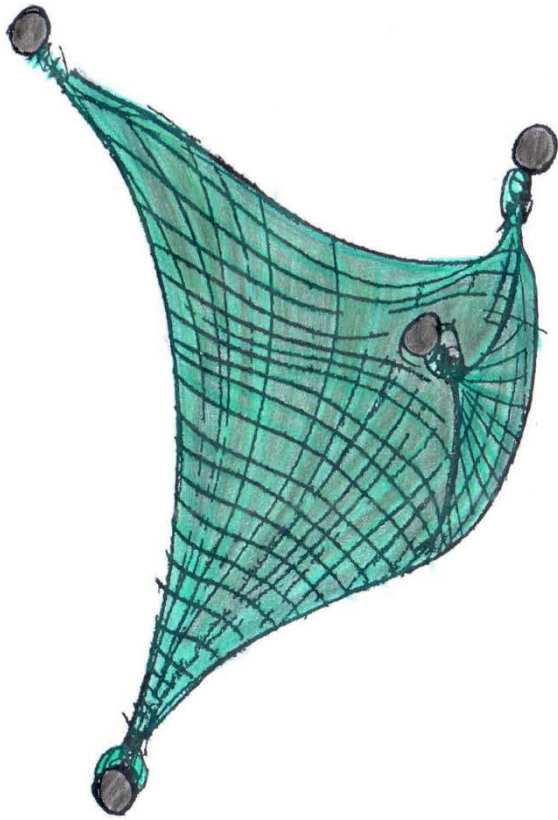
talon
(bundok)



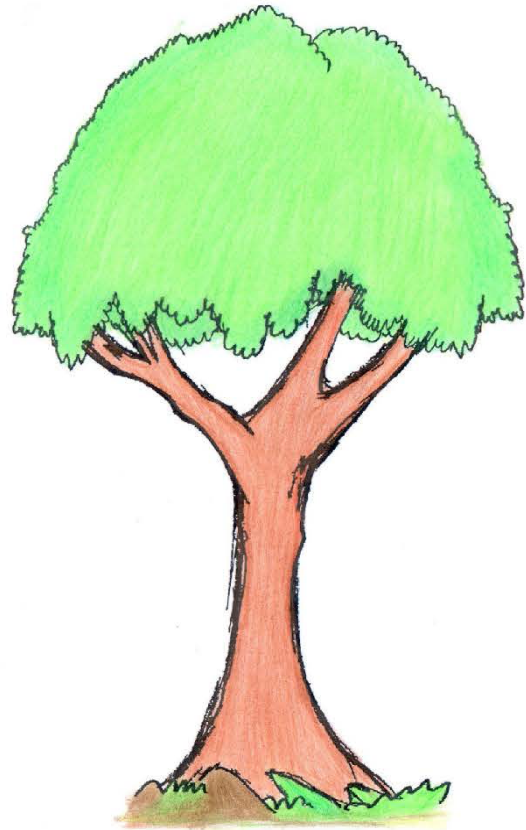
bukid
(gubat)



maestra
(guro)

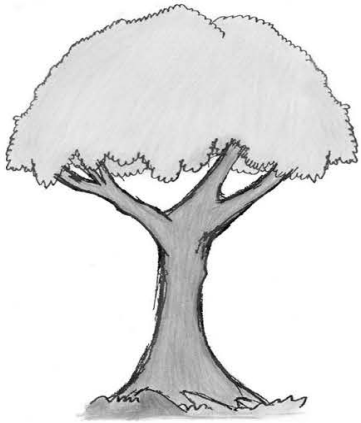


sayot

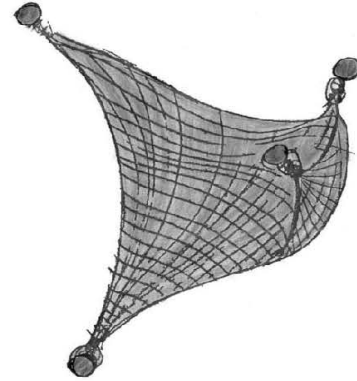


kayo





kayo
(puno)



sayot
(lambat)



lalaki
(lalaki)