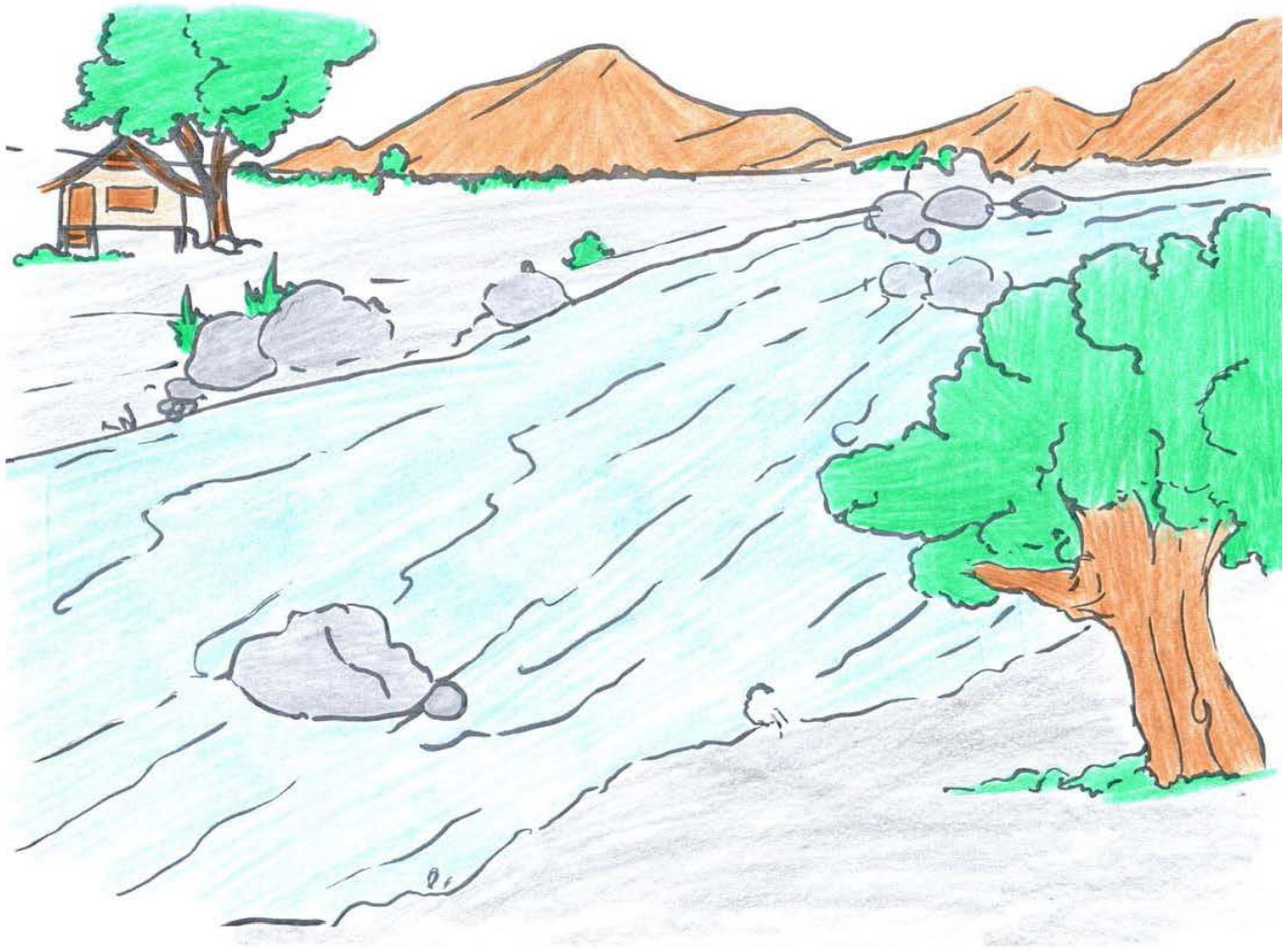


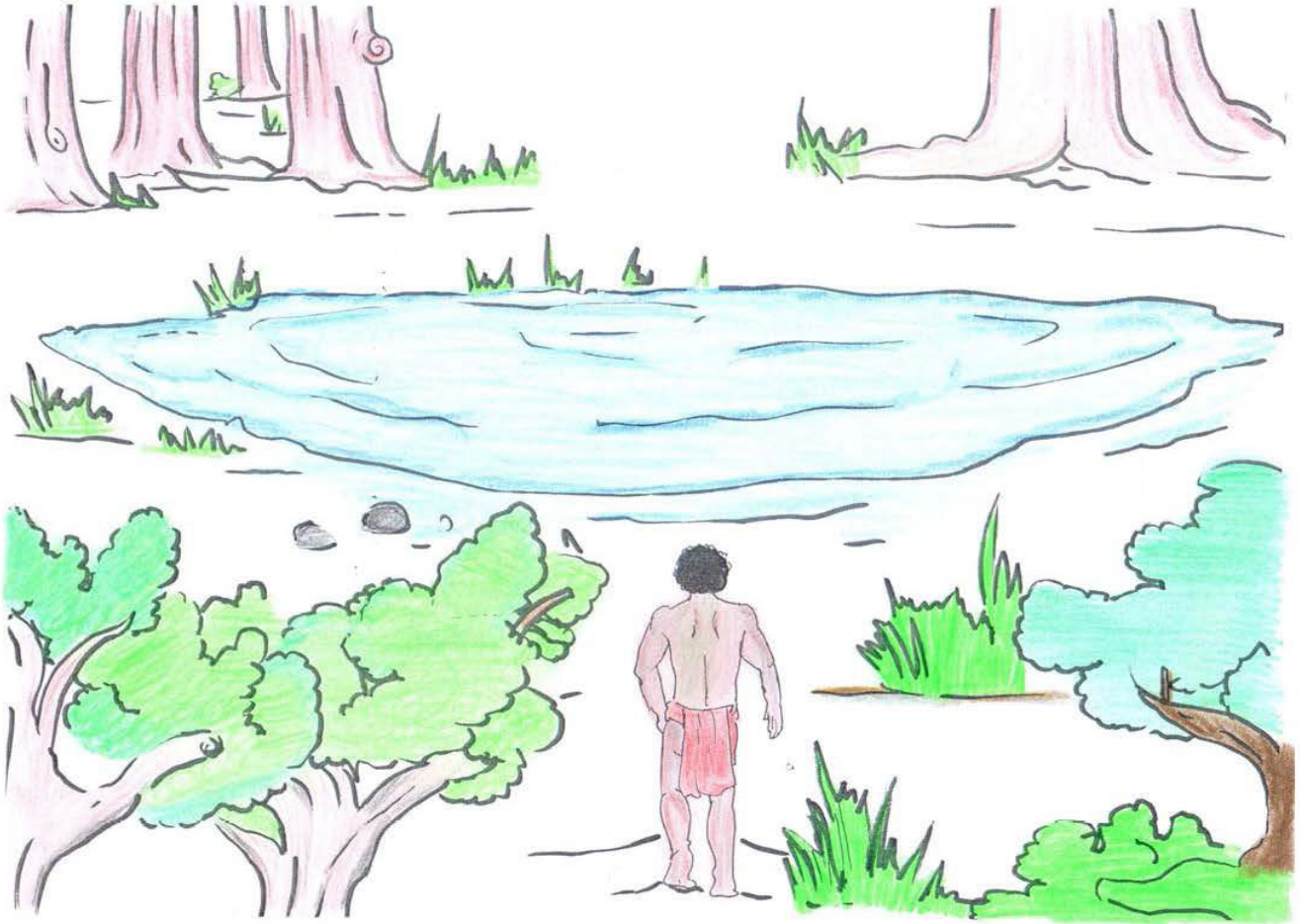
**(Mga  
Anyong  
Tubig)**



**Dikkel a dinum**



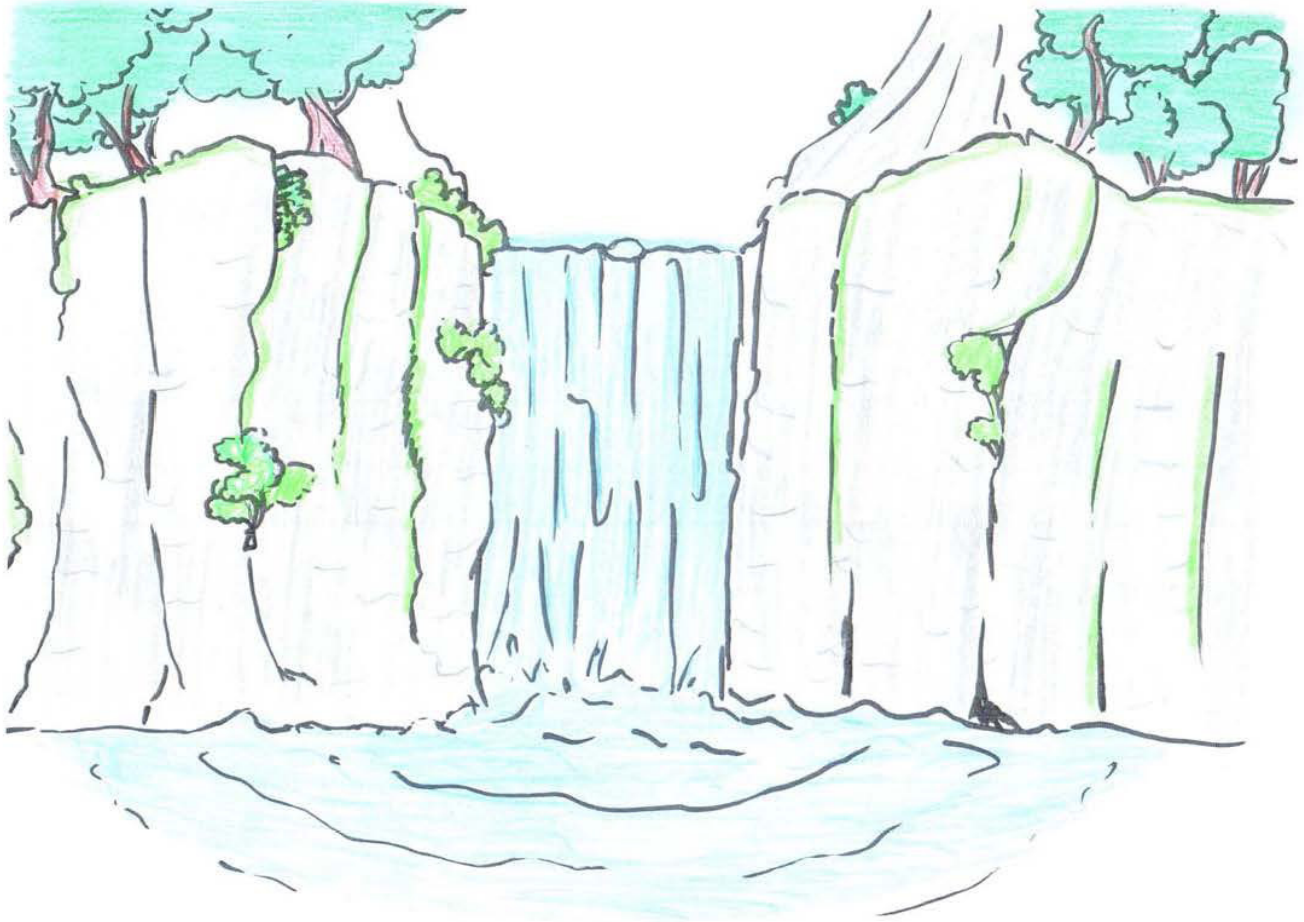
# Kediklen



# Wanga

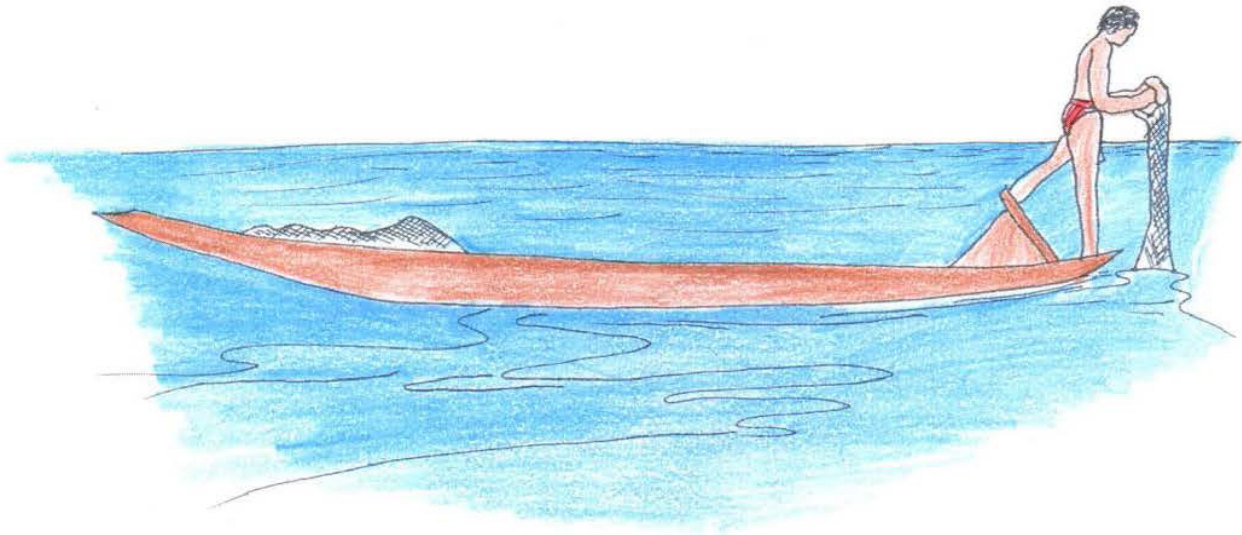


# Palaw



**Tumatepduk a dinum**

# **Klasina Trabahu**



**(pangingisda)**





**pagaanup**

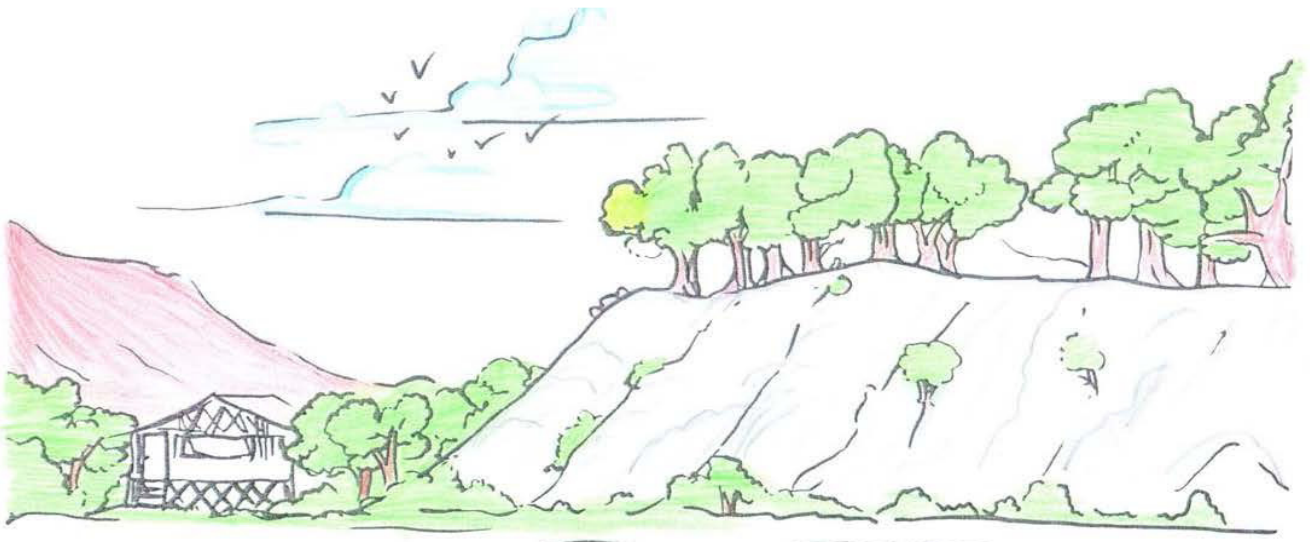


**pagleledep**

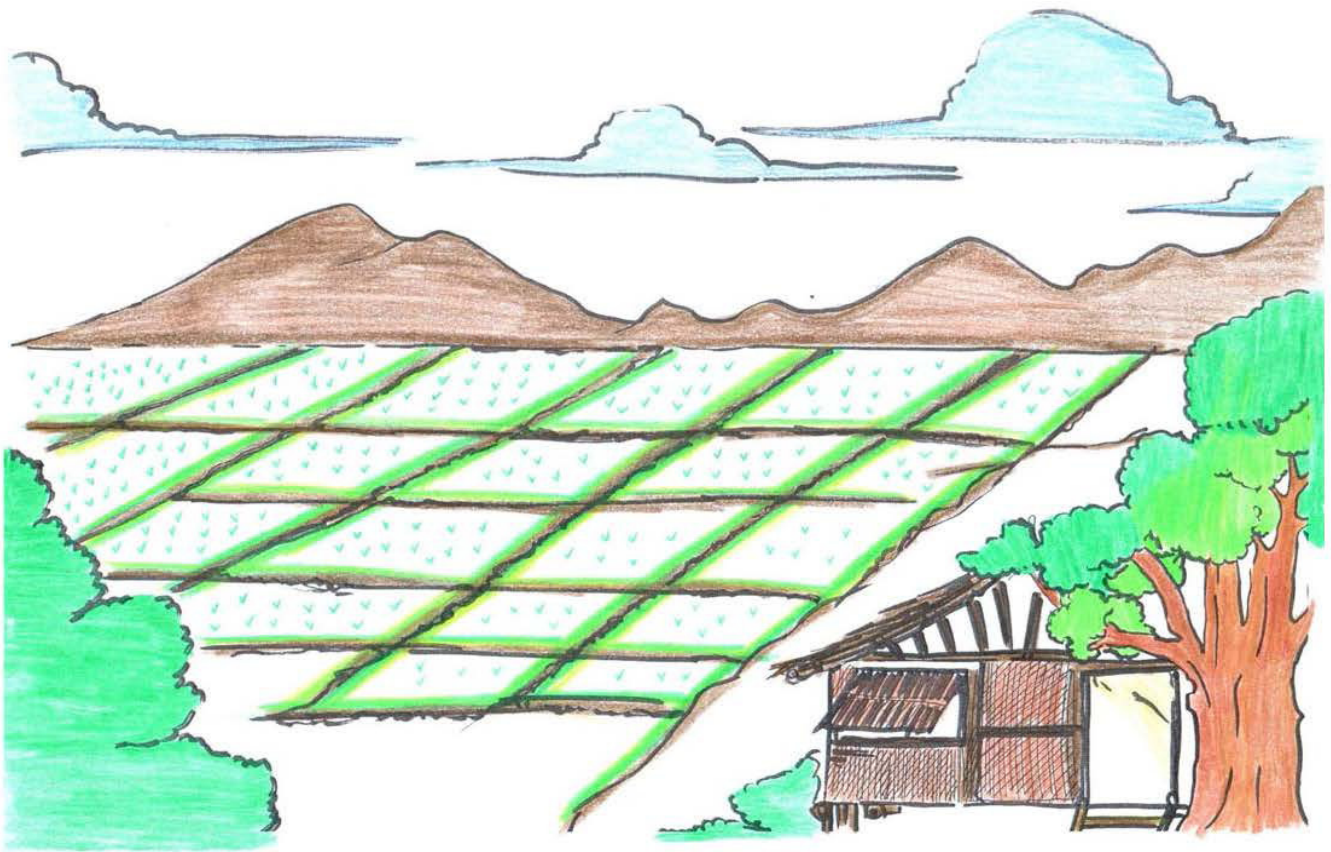


**pagkakayu**

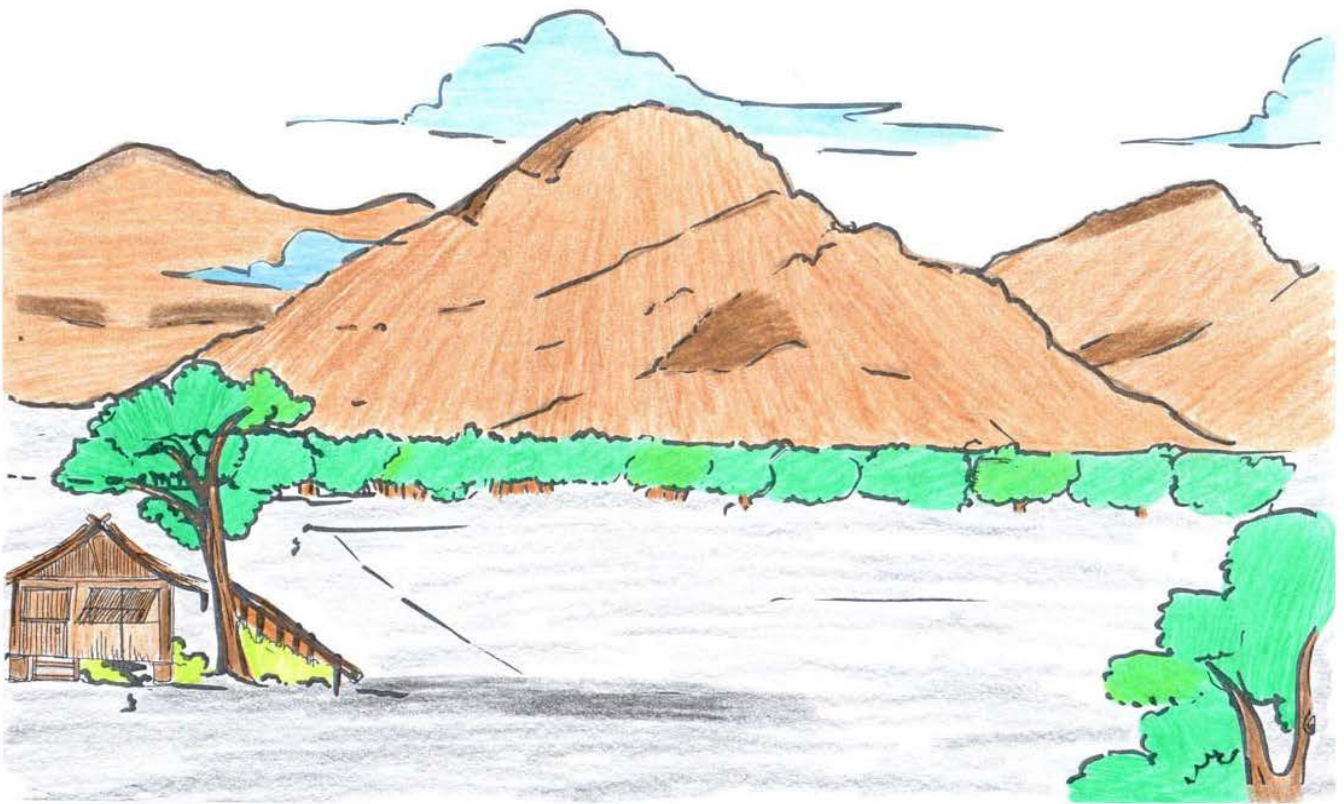
# **Klasina Luta**



**paguhyas**



**patag**



**bukid**

# **Klasina Panahon**





**mepahes**



**tag-uden**



**tag-bilag**

# Seye i Kadulawan Pang-agta



In partnership with the Agta communities in  
Maddela and Nagtipunan  
Province of Quirino

Produced by:



**LYCEUM OF THE PHILIPPINES UNIVERSITY**  
**Community Outreach and Service Learning (COSeL)**  
Rm. 206-A JPL Building  
33 Muralla cor. Real Streets  
Intramuros, Manila 1002  
Philippines  
Telephone #: 527-8251 to 56 loc. 127  
E-mail: outreach@lpu.edu.ph

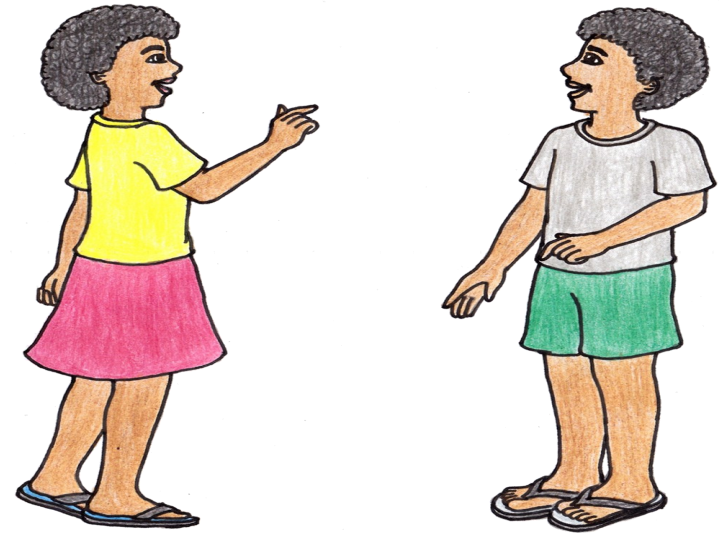
Printed with support from:



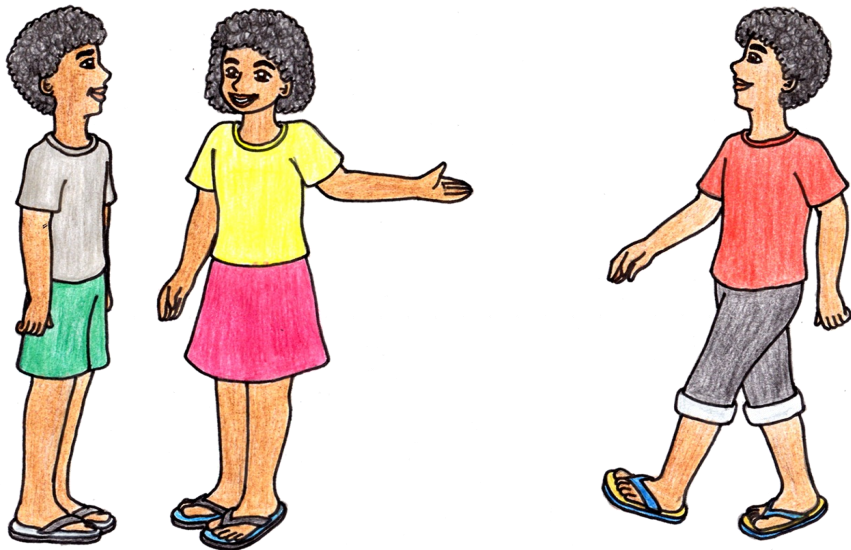
Saken



Siko



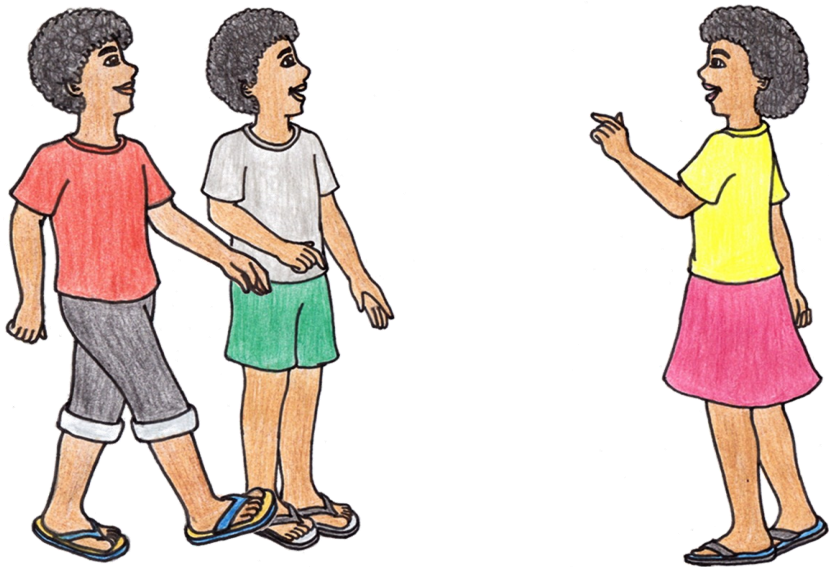
Siya



Si kitam



Sikam



Side



Sikami



# Seye Lugarmiyá





In partnership with the Agta communities in  
Maddela and Nagtipunan  
Province of Quirino

Produced by:



**LYCEUM OF THE PHILIPPINES UNIVERSITY**  
**Community Outreach and Service Learning (COSeL)**

Rm. 206-A JPL Building  
33 Muralla cor. Real Streets  
Intramuros, Manila 1002  
Philippines  
Telephone #: 527-8251 to 56 loc. 127  
E-mail: outreach@lpu.edu.ph

Printed with support from:

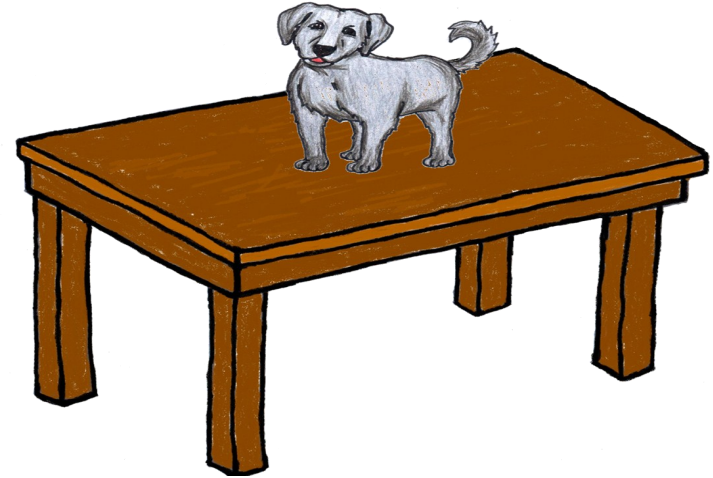


ta disalad



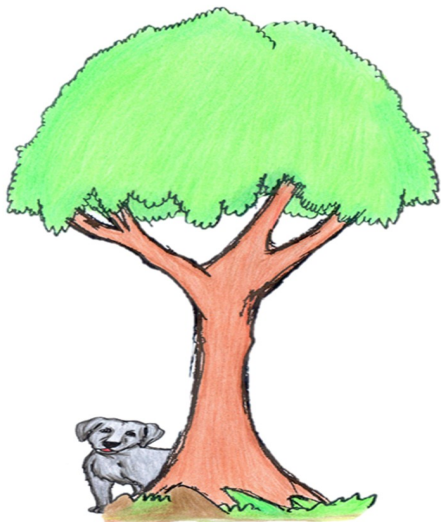
I asowa ey egse ta **disalad** na lamisaan.

ta diboh



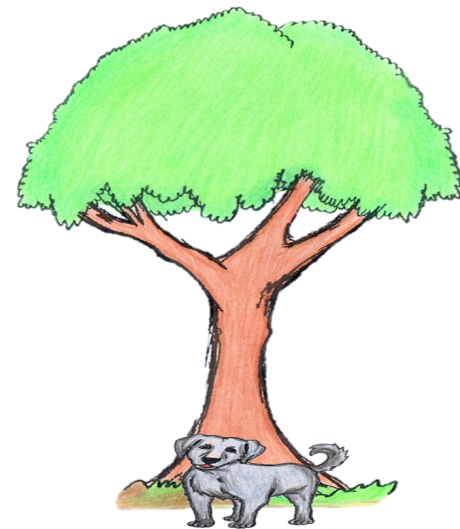
I asowa ey egse ta **diboh** na lamisaan.

ta adeg



I asowa ey egse ta **adeg** na kayowa.

ta harap



I asowa ey egse ta **harap** na kayowa.

ta lubuk



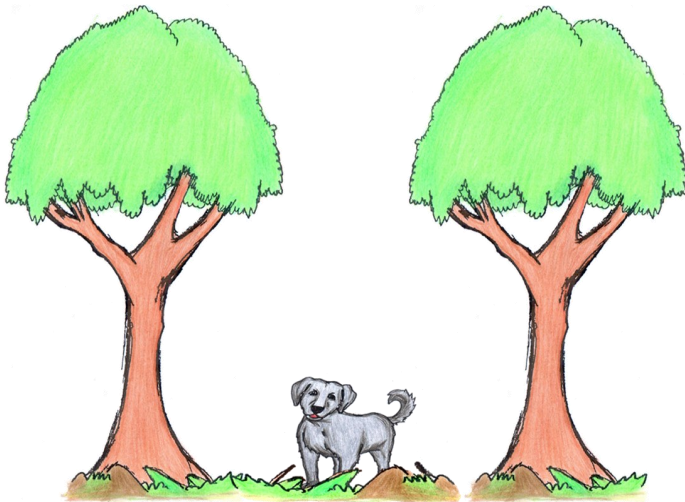
I asowa ey egse ta lubuk na bile.

ta luwas



I asowa ey egse ta luwas na bile.

ta belog



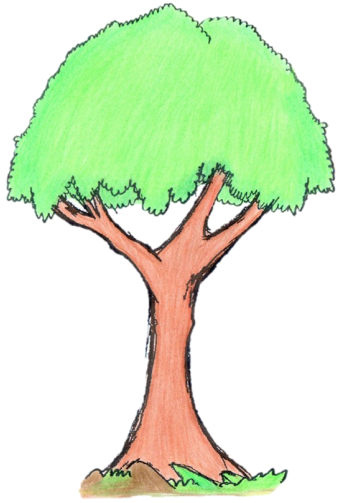
I asowa ey egse ta belog na adduwa a kayo.

ta abay



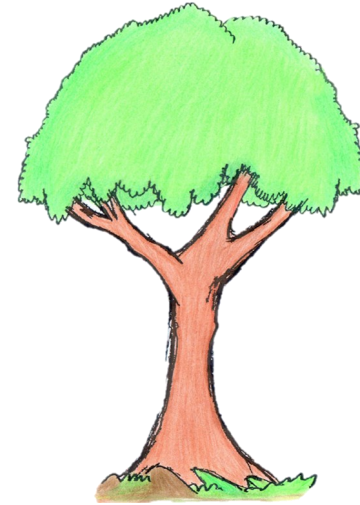
I asowa ey egse ta abay na bebé.

me adeyo



I asowa ey egse me adeyo na kayowa.

me giled



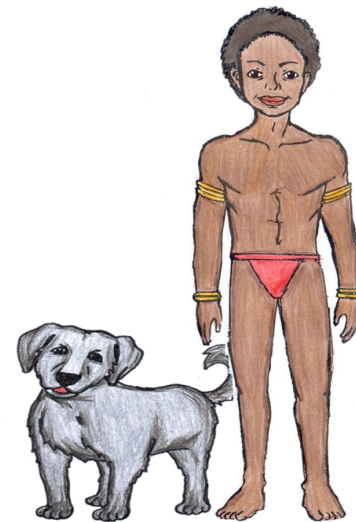
I asowa ey egse me giled na kayowa.

ta kawatanan



I asowa ey egse ta kawatanan na lalakiá.

ta kahiwe



I asowa ey egse ta kahiwe na lalakiá.